



DEVELOPMENT & PROTOTYPE MANUFACTURING

BOXMARK®





Since 1995 BOXMARK has been processing in Kidricevo, Slovenia, the upholstery leather produced at its Austrian headquarters for the premium segments of the automotive, aircraft, rail and ship industries. The extensive portfolio includes all leather processing services (cutting, embossing, perforating, laminating, sewing, embroidery and leather covering).

Operating area

32.000
Square meters

Workforce

700
Employees

Cutting capacity

1.000
Hides/Day

Sewing capacity

300
Sets/Day

Product lines



Automotive



Air



Rail



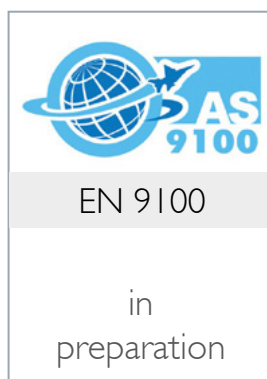
Sea



Contract



Certificates



DEVELOPMENT MANUFACTURE

Seamless Design-to-Manufacture (SD2M): At BOXMARK you receive the entire range of development services - from design to material development and further to the series products - from a single source. With just one central point of contact, you benefit from high planning security, seamless processes and a transparent cost structure.



1

FEASIBILITY ANALYSIS

- analysis of technical data
- analysis of specific customer requirements
- analysis of provided reference patterns
- analysis of required materials



2

ENGINEERING

- modeling
- design and cutting development
- material developments
- definition of processes and processing techniques



3

MANUFACTURING - PROTOTYPE

- cutting, levelling
- embossing, perforating
- laminating, embroidering
- sewing, upholstering, leathering



4

SAMPLING

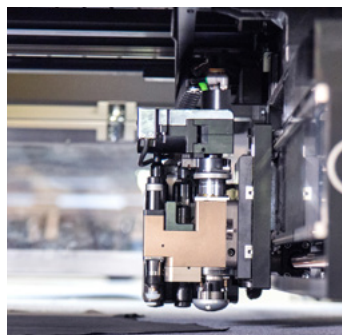
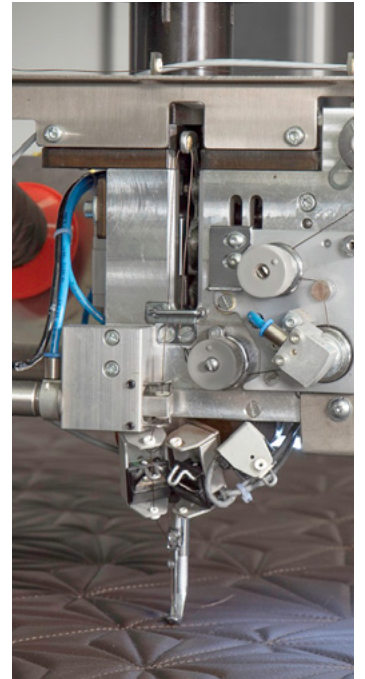
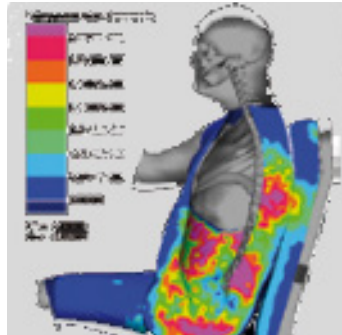
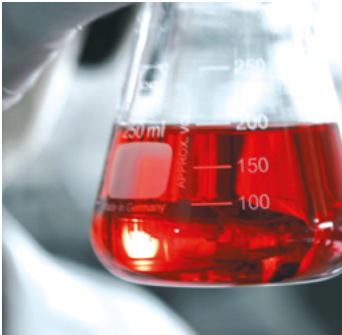
- internal / external
- coordination and implementation of optimizations
- final acceptance
- prompt manufacturing of a production testing series



5

TRANSFER TO SERIES PRODUCTION

- interface management for series production
- development support for series processes
- standardized transfer of the development project to series production if in-house production



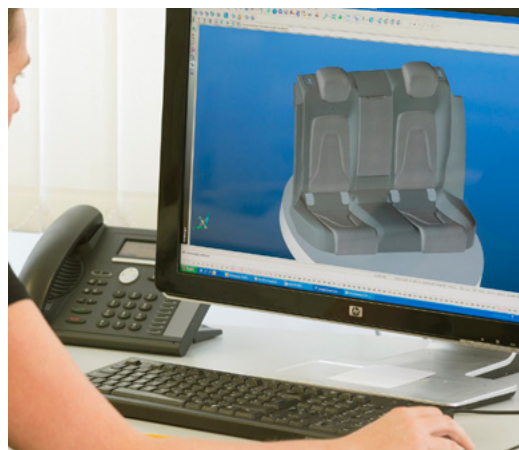
RESOURCES

Top-qualified employees and most modern equipment guarantee development services at the highest level. Our development software (e.g. Lectra, Catia, NX Siemens, Assyst, Draft-Sight, VXModel, Wilcom Embroidery, etc.) is not only state-of-the-art, its high degree of compatibility also ensures smooth data exchange with our partners. Material and process engineers accompany both the development projects and the ongoing series production.



17

Developers



2

CAD-specialists

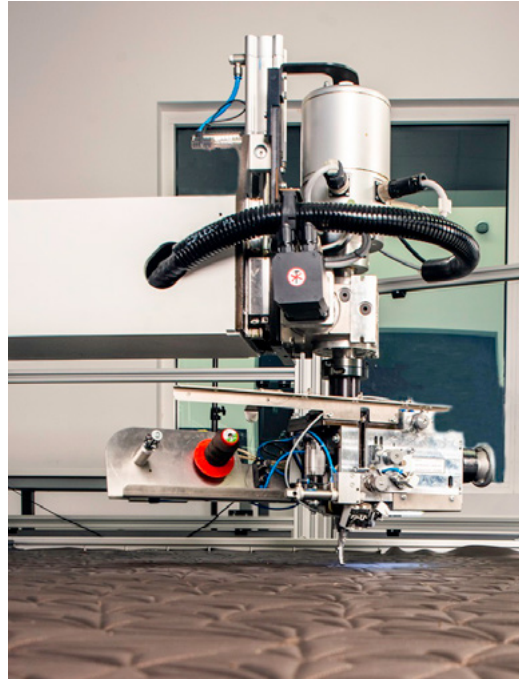


4

PPAC-specialists

5

Lab workers



10

Seamstresses

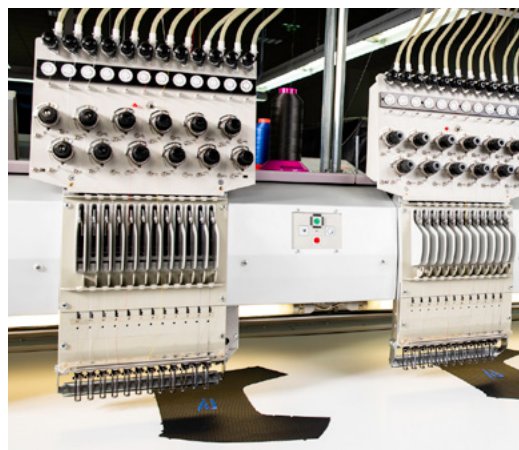


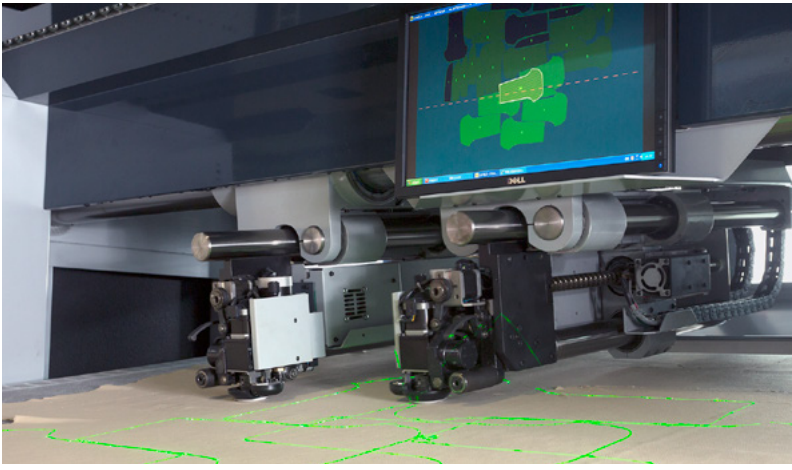
18

Series operators

7

Administrators





- CNC Leather cutter
- CNC Textile cutter
- CNC Plotter
- Single-stroke and MM/HD perforation
- CNC Sewing automat
- CNC Embroidery machine
- 3D-Scanner
- etc.

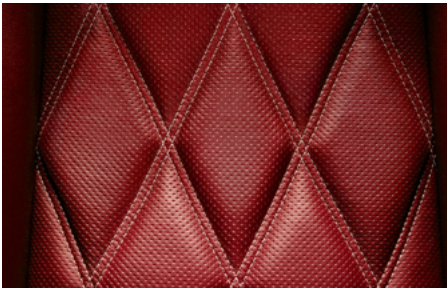


SD2M - ENDLESS OPTIONS



The desire for a perfect piece of uniqueness is the starting point for all development projects carried out by BOXMARK. A quick understanding of a customer's ideas, attention to detail and creativity, as well as highly qualified employees provide the basis for a reliable realization of visions. Be it new leather seat covers for vehicles, sophisticated and well-designed furnishings for aircraft, ships and trains, trendy and stylish wall coverings and building constructions or classic seating furniture - there are no limits to design requirements in the world of BOXMARK. We live interior.







BOXMARK®
Best in Leather Interior

BOXMARK LEATHER d.o.o.

Industrijsko naselje 10, 2325 Kidricevo SLOVENIA, Phone: +386 2 7991 600, Fax: +386 2 7991 641, E-mail: si.office@boxmark.com

www.boxmark.com